



**FORBES PROPERTY**  
PROPERTY, LETTING & MORTGAGE ADVICE

# HOUSE FOR SALE

**South Park Cottage  
Lonmay AB43 8RH**

**Offers over £115,000**

**NEW**



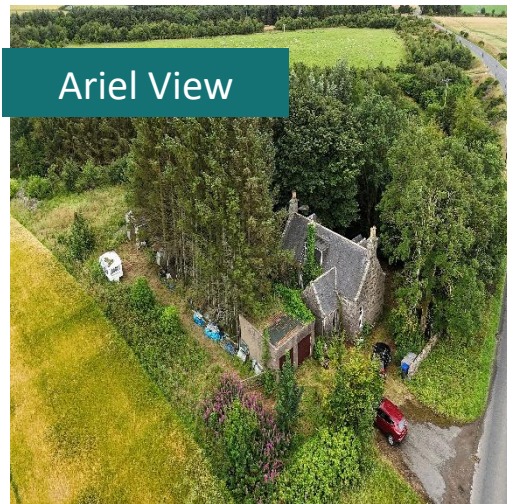
**Double Garage**



**Kitchen View**



**Ariel View**



Property

## Features

- ✓ 2 LIVING ROOMS
- ✓ 3 DOUBLE BEDROOMS
- ✓ 2 BATHROOMS
- ✓ GAS - FIRED BOILER TO RADIATORS
- ✓ DOUBLE-GLAZING
- ✓ DOUBLE GARAGE
- ✓ WORKSHOP
- ✓ COUNCIL TAX BAND E
- ✓ EPC RATING E
- ✓ PRIVATE WATER SUPPLY

About The

## Property

This property is a 3-bedroom rural cottage offering great potential, ideally located close to main transport routes. Features include a double garage, a generous workshop, and a spacious layout perfect for customisation. While the property requires some work, it presents an excellent opportunity for renovation and adding value in a desirable countryside setting.

Why

## Choose Us

Forbes Property is an established estate agency that has been operating in the northeast since 1988.

During this period, we have worked closely with the local community to build an established reputation that is commended for our friendly service, approachability and professionalism.



FOR MORE DETAILS:  
**01346 517124**



**68 Broad Street,  
Fraserburgh, AB43 9AS**



VISIT OUR WEBSITE  
**[WWW.FORBESPROPERTY.CO.UK](http://WWW.FORBESPROPERTY.CO.UK)**



## Accommodation Key Features

### **Property opportunities:**

Offering 3 spacious bedrooms and 2 bathrooms, this property provides generous space for a family or a savvy investor. While it does require some work, it presents an excellent opportunity to add value and personalise to your taste.

### **Driveway:**

The double garage adjacent to the cottage leaves ample parking, as well as an off-road parking area.

### **Close to All Amenities:**

This property is ideally situated just a short drive from Fraserburgh, Peterhead, and Mintlaw, offering easy access to a range of shops, schools, and local amenities—perfect for families and commuters alike.

### **Easy Access for Travel:**

Accessibility to major roads, highways, or transport hubs ensures smooth travel for residents. Whether commuting to work or embarking on weekend getaways, the property's location offers convenience for travellers.

[Don't miss the opportunity to make this 3-bedroom property yours. Contact us for a viewing and experience the epitome of contemporary living.](#)

## Floor plan



Main Entrance















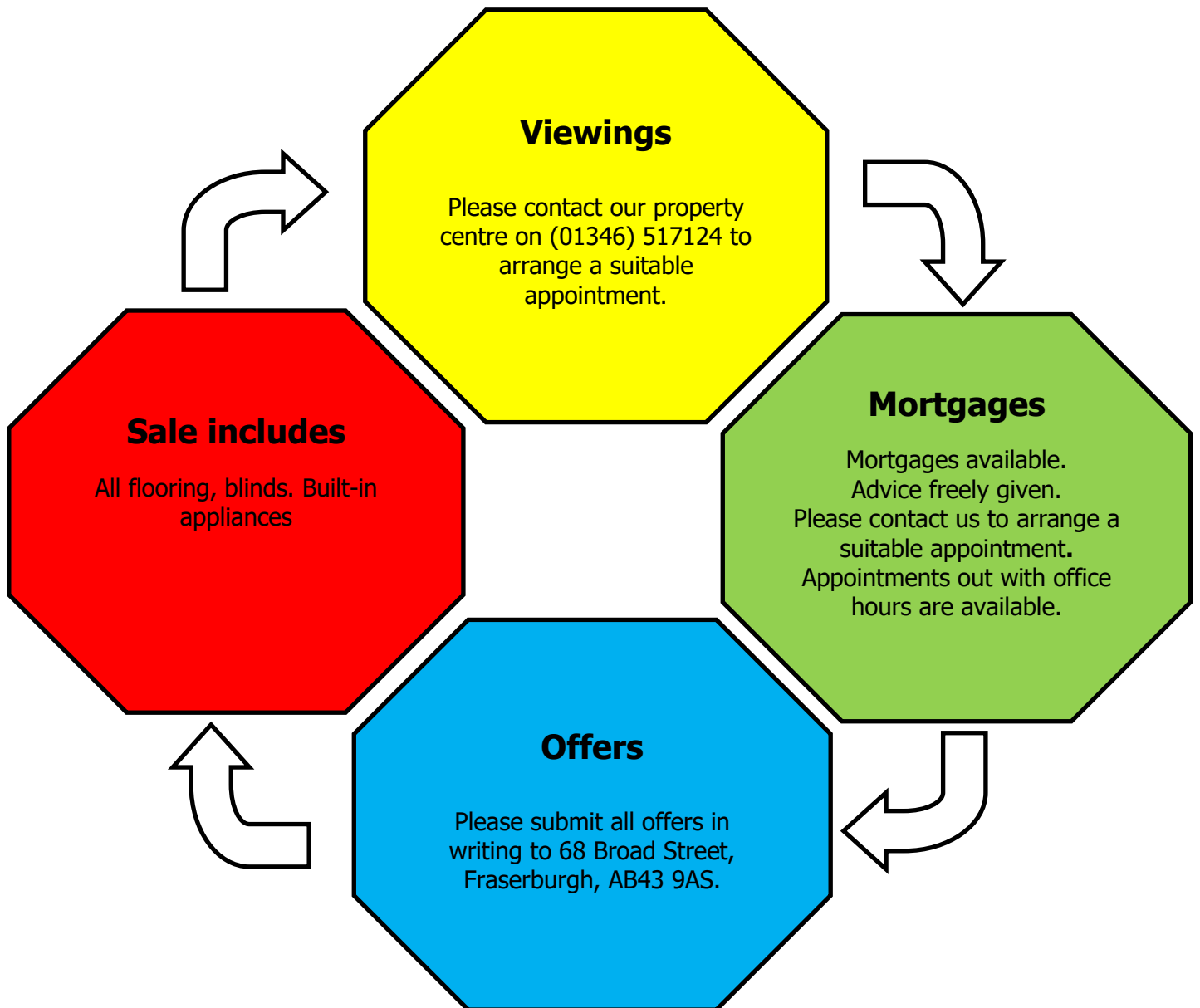












**Please Note:** Whilst the foregoing particulars are believed to be correct, they are not guaranteed therefore purchasers should satisfy themselves on all points prior to submitting an offer.

N.B Your home is at risk if you do not keep up repayments on a mortgage or other loan secured on it.